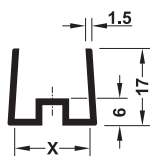
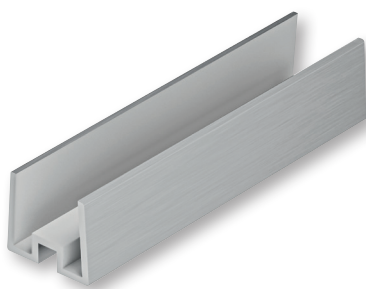
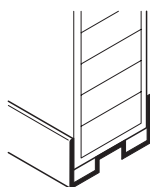


Side panel profile

Height 17 mm



X = Width



> Perfectly matching end caps with optimum clamping available

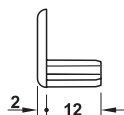


- > Area of application: For floor connection of side panels
- > Version: Can be shortened
- > Material: Plastic
- > Colour/finish: Stainless steel coloured
- > Length: 2500 mm
- > Height: 17 mm
- > Mounting: For clipping on

For panel thickness mm	Cat. No.
16	713.95.012
25	713.95.032

Packing: 1 Piece

→ End caps



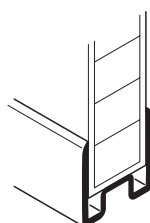
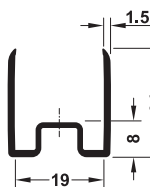
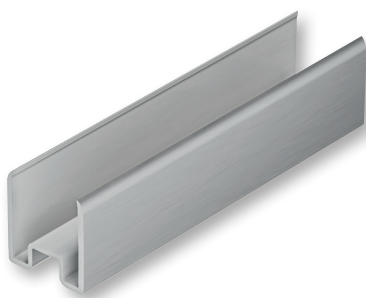
- > Material: Plastic
- > Colour/finish: Stainless steel coloured
- > Usable for: Side panel profile, height 17 mm
- > Mounting: For clipping on, additional fixing with adhesive foil

For panel thickness mm	Cat. No.
16	713.95.091
25	713.95.093

Packing: 1 or 100 Pieces

Side panel profile

Height 24 mm



> Perfectly matching end caps with optimum clamping available

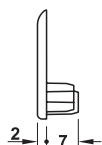


- > Area of application: For floor connection of side panels
- > Version: Can be shortened
- > Material: Plastic
- > Colour/finish: Stainless steel coloured
- > Length: 2500 mm
- > Height: 24 mm
- > Mounting: For clipping on

For panel thickness mm	Cat. No.
19	713.95.022

Packing: 1 Piece

→ End caps



- > Material: Plastic
- > Colour/finish: Stainless steel coloured
- > Usable for: Side panel profile, height 24 mm
- > Mounting: For clipping on, additional fixing with adhesive foil

For panel thickness mm	Cat. No.
19	713.95.092

Packing: 1 or 100 Pieces

